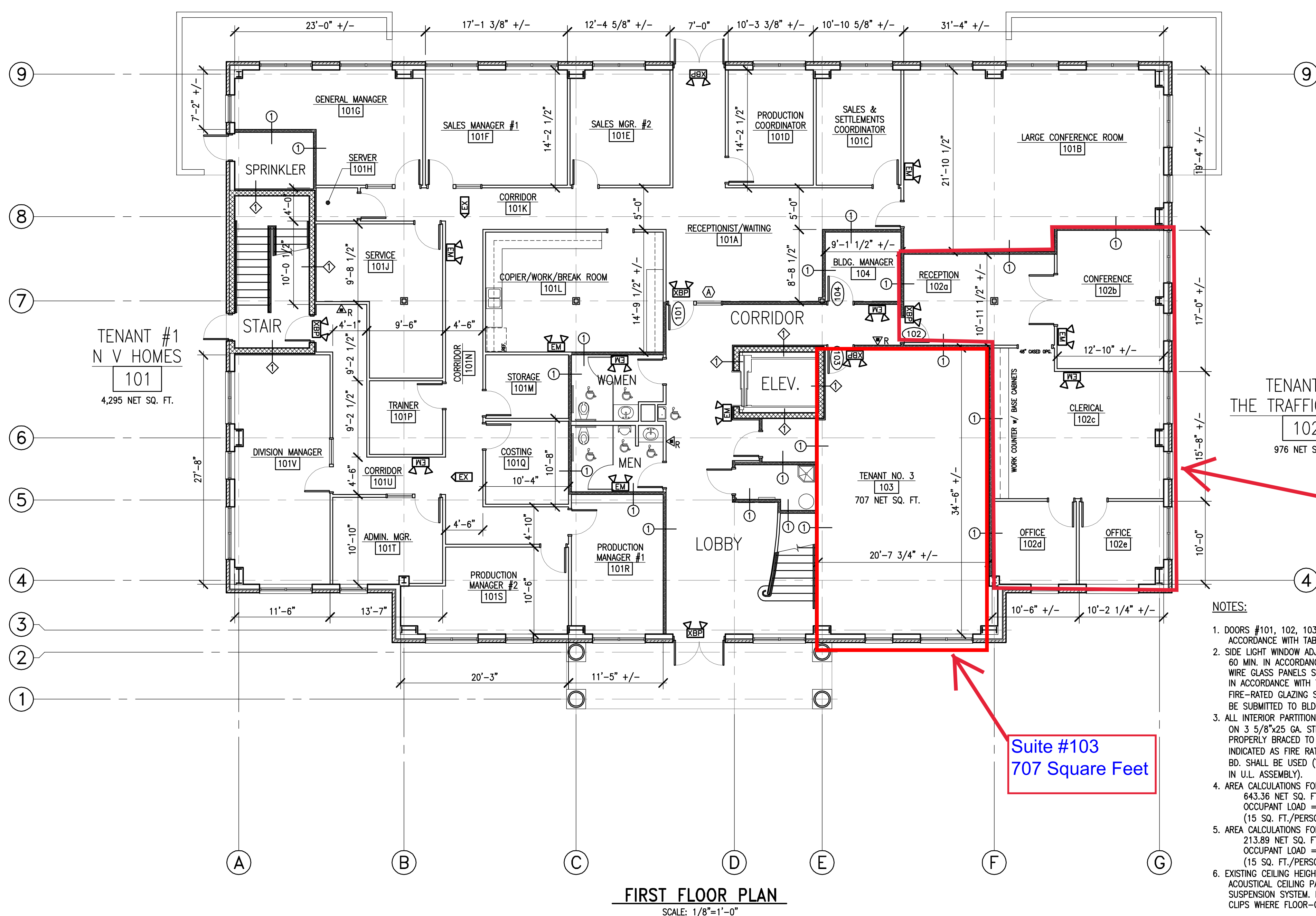


- NOTES:**
- DOORS #201 & 202 SHALL BE RATED 60 MIN. IN ACCORDANCE WITH TABLE 714.2 OF I.B.C. 2000.
 - ALL INTERIOR PARTITIONS AND WALLS SHALL BE 5/8" GYP. BD. ON 3 5/8"x25 GA. STL. STUDS AT 16" O.C. AND SHALL BE PROPERLY BRACED TO STRUCTURAL STEEL. WHERE WALLS ARE INDICATED AS FIRE RATED, TYPE "X", FIRECODE "C" GYP. WALL BD. SHALL BE USED (THICKNESS AND # OF LAYERS AS INDICATED IN U.L. ASSEMBLY).
 - AREA CALCULATIONS FOR REHAB GYM ROOM #201D:
340.77 NET SQ. FT.
OCCUPANT LOAD = 7 PERSONS
(50 SQ. FT./PERSON PER TABLE 1003.2.2.2 OF I.B.C. 2000 FOR EXERCISE ROOMS)
 - AREA CALCULATIONS FOR ARTS & CRAFTS ROOM #201R:
802.43 NET SQ. FT.
OCCUPANT LOAD = 40 PERSONS
(20 SQ. FT./PERSON PER TABLE 1003.2.2.2 OF I.B.C. 2000 FOR CLASSROOM AREAS)
 - AREA CALCULATIONS FOR DINING/ACTIVITIES ROOM #201C:
2,298.33 NET SQ. FT.
OCCUPANT LOAD = 153 PERSONS
(15 SQ. FT./PERSON PER TABLE 1003.2.2.2 OF I.B.C. 2000 FOR UNCONCENTRATED ASSEMBLY AREAS)
 - SPECIAL NOTE: STATE OF MARYLAND DEPT. OF HEALTH & MENTAL HYGIENE REGULATIONS LIMIT THE NUMBER OF PARTICIPANTS/CLIENTS TO A MAXIMUM OF 55.
 - EXISTING CEILING HEIGHT = 9'-0". EXISTING CEILING IS 24"x24"x5/8" ACOUSTICAL CEILING PANELS LAYED IN EXPOSED STL. GRID SUSPENSION SYSTEM. PROVIDE FIRE-RATED PANELS AND HOLD-DOWN CLIPS WHERE ROOF-CEILING ASSEMBLY RATED.
 - CONSTRUCTION TYPE, HEIGHT AND AREA REQUIREMENTS FOR GROUP I-4 OCCUPANCY ARE APPLICABLE FOR THE ENTIRE BUILDING WHICH ALLOWS FOR NONSEPARATED USES IN ACCORDANCE WITH SECTION 302.3.1 OF THE I.B.C. 2000. GROUP I-4 IS THE MORE STRINGENT OF THE OCCUPANCIES APPLIED TO THIS FACILITY.

TENANT #4
ARBOR AT OCEAN PINES
201
6,358 NET SQ. FT.
(ACCOMMODATES 55 CLIENTS)

Suite #201
6,358 Square Feet
All of 2nd floor



TENANT #2
THE TRAFFIC GROUP
102
976 NET SQ. FT.

Suite #105
976 Square Feet

Suite #103
707 Square Feet

- NOTES:**
- DOORS #101, 102, 103, & 104 SHALL BE RATED 60 MIN. IN ACCORDANCE WITH TABLE 714.2 OF I.B.C. 2000.
 - SIDE LIGHT WINDOW ADJACENT TO DOOR #101 SHALL BE RATED 60 MIN. IN ACCORDANCE WITH TABLE 714.2 OF I.B.C. 2000. WIRE GLASS PANELS SHALL BE LIMITED TO 100 SQ. INCHES IN ACCORDANCE WITH TABLE 714.3.2 OF I.B.C. 2000. FIRE-RATED GLAZING SHALL BE USED (PRODUCT DATA SHALL BE SUBMITTED TO BLDG. INSPECTIONS FOR VERIFICATION).
 - ALL INTERIOR PARTITIONS AND WALLS SHALL BE 5/8" GYP. BD. ON 3 5/8"x25 GA. STL. STUDS AT 16" O.C. AND SHALL BE PROPERLY BRACED TO STRUCTURAL STEEL. WHERE WALLS ARE INDICATED AS FIRE RATED, TYPE "X", FIRECODE "C" GYP. WALL BD. SHALL BE USED (THICKNESS AND # OF LAYERS AS INDICATED IN U.L. ASSEMBLY).
 - AREA CALCULATIONS FOR LARGE CONFERENCE ROOM #101B:
843.36 NET SQ. FT.
OCCUPANT LOAD = 43 PERSONS
(15 SQ. FT./PERSON PER TABLE 1003.2.2.2 OF I.B.C. 2000)
 - AREA CALCULATIONS FOR CONFERENCE ROOM #102B:
213.89 NET SQ. FT.
OCCUPANT LOAD = 15 PERSONS
(15 SQ. FT./PERSON PER TABLE 1003.2.2.2 OF I.B.C. 2000)
 - EXISTING CEILING HEIGHT = 8'-4". EXISTING CEILING IS 24"x24"x5/8" ACOUSTICAL CEILING PANELS LAYED IN EXPOSED STL. GRID SUSPENSION SYSTEM. PROVIDE FIRE-RATED PANELS AND HOLD-DOWN CLIPS WHERE FLOOR-CEILING ASSEMBLY RATED.

11202 Racetrack Rd
Ocean Pines, MD 21811
(middle building)

PROJECT DATA

BUILDING CODE:	INT'L. BLDG. CODE 2000
CONSTRUCTION TYPE:	II-B (BG 2000)/II-C00 (NFPA 220)
BUILDING USE GROUP:	FIRST FLOOR: B (BUSINESS)
	SECOND FLOOR: I-4 (ADULT DAY CARE/INSTITUTIONAL)
BUILDING AREA:	15,480 SQ. FT. (7,740 SQ. FT. PER FLR.)
BUILDING HEIGHT:	2-STORIES/44 FT. TO ROOF PEAK
SPRINKLER SYSTEM:	WET SYSTEM COMPLYING WITH NFPA 13
ALLOWABLE AREA:	13,000 SQ. FT. PER FLOOR (NO AREA MODIFICATIONS)
MAXIMUM HEIGHT:	2-STORIES/55 FT. (NO HEIGHT MODIFICATIONS)
	(IN ACCORDANCE WITH TABLE 503 AND SECTIONS 503, 504, & 506 FOR HEIGHT AND AREA MODIFICATIONS AS APPLICABLE.)

DIMENSIONS AND FIELD CONDITIONS

CONTRACTOR SHALL FIELD VERIFY ALL DIMENSIONS AND FIELD CONDITIONS ON THE DRAWINGS AND IN THE FIELD PRIOR TO STARTING CONSTRUCTION AND FABRICATION.

DESIGN LOADS - CODE: IBC 2000.

WIND LOADS:		115 MPH
BASIC WIND SPEED		1.0
IMPORTANCE FACTOR		C
EXPOSURE		(3,0)1.8
INTERNAL PRESSURE COEFFICIENT		
FLOOR LOADS:		80 PSF
LIVE LOAD		85 PSF
DEAD LOAD		5 PSF
MECHANICAL LOAD		
ROOF LOADS:		20 PSF
LIVE LOAD		25 PSF
DEAD LOAD		5 PSF
MECHANICAL LOAD		
SNOW LOADS:		20 PSF
GROUND SNOW LOAD		1.0
IMPORTANCE FACTOR		0.6
SLOPE FACTOR		
EARTHQUAKE LOADS:		1
SEISMIC USE GROUP		0.181
COEFFICIENT S _{ds}		0.0088
COEFFICIENT S _{u1}		0
SITE CLASS		D
RESISTING SYSTEM		35 KIPS
DESIGN BASE SHEAR ANALYSIS PROCEDURE		EQUVALENT LATERAL FORCE

FLOOR PLAN LEGEND

[101]	ROOM NUMBER
(101)	DOOR NUMBER
◇	1 HR. RATED C.M.U. ASSEMBLY
①	1 HR. RATED GYP. BD. ASSEMBLY (U.L. DESIGN NO. U419)
▽	FIRE EXTINGUISHER - BRACKET MOUNTED (4A-60B.C)
▽R	FIRE EXTINGUISHER - RECESSED CABINET (4A-60B.C)
EXIT	EMERGENCY LIGHTS
EXIT	EXIT LIGHT
EXIT	EXIT LIGHT w/ EMERGENCY LIGHTS

NOTE: BASIC PLAN DIMENSIONS ARE TO FACE OF STUD, FACE OF MASONRY, OR CENTERLINE OF COLUMN AS APPLICABLE.

REVISIONS BY

13 JAN 05	KBO
17 MAR 05	KBO
4 APR 05	KBO

PROJECT NORTH

I CERTIFY THAT THESE DOCUMENTS WERE PREPARED OR APPROVED BY ME, AND THAT I AM A LICENSED ARCHITECT UNDER THE LAWS OF THE STATE OF MARYLAND. LICENSE NUMBER 15217. EXPIRATION DATE: 12/26/06.

ANDREW W. BOOTH & ASSOCIATES, INC.
1942 MILLERSVILLE RD. #100
MILLERSVILLE, MD 21104
TEL: (410) 742-7289 FAX: (410) 742-2033

MERVIN L. BLADES & SON, INC.
BLADES
P.O. DRAWER 142 (132 LUMBER RD.)
PO BOX 100 (MAYLAND AND 289)
PO BOX 100 (MAYLAND AND 289)
PINEVILLE, MD 21134

TENANT FIT-OUT FLOOR PLANS
THE PAVILIONS, PHASE II
OCEAN PINES, MARYLAND

DATE 03 JAN 2005
SCALE 1/8"=1'-0"
DRAWN KBO
JOB 041202
FILE FE-5
SHEET AS-1